

## Scleromalacia in Rheumatoid Arthritis

Category(ies): Cornea, External Disease, Uveitis

Contributor: [William Flanary, MD](#)

Photographer: Venckus, Antoinette



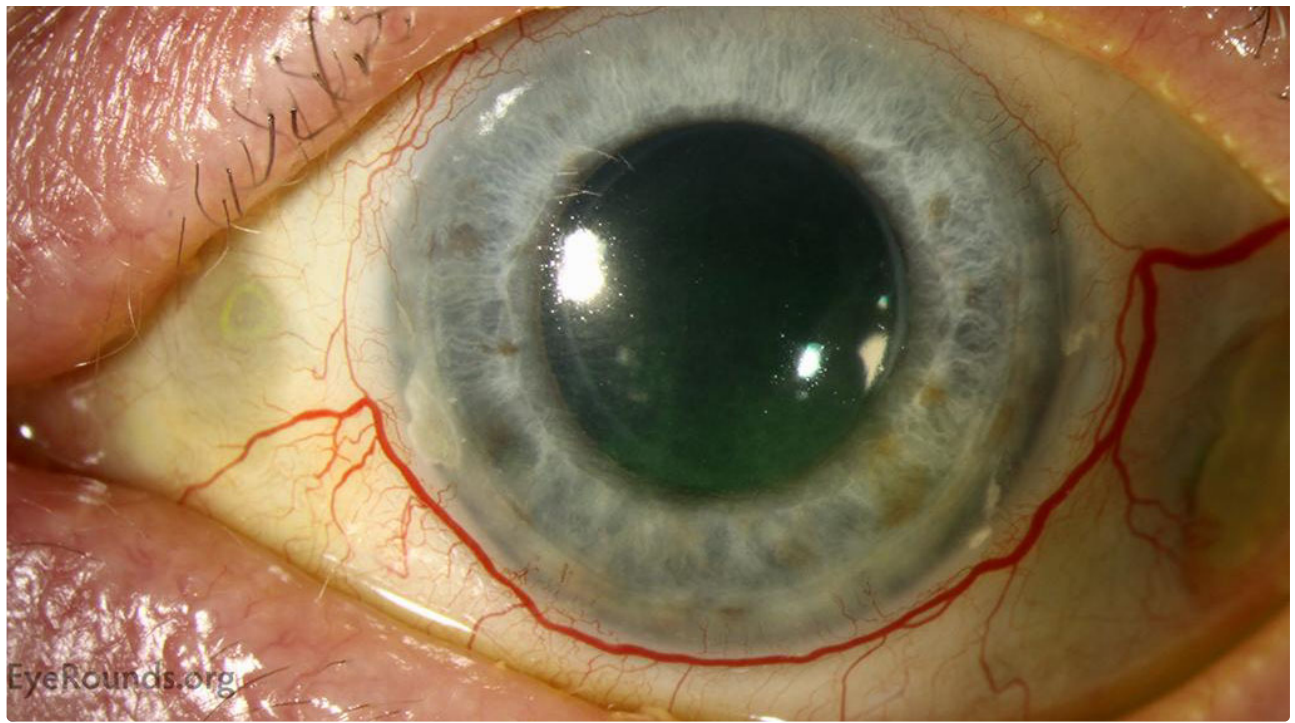
This patient is an 88-year-old female with a history of rheumatoid arthritis who presented with bilateral eye pain. An external photo of the right eye shows dilated episcleral vessels traversing 360 degrees around the limbus. There is significant scleromalacia around the senile calcific plaque temporally with a deep furrow extending roughly 90% through the sclera. Underlying uvea can be seen on the close-up photo of the right eye. Less advanced scleromalacia is seen nasally. The left eye also exhibits dilated episcleral vessels surrounding the limbus as well as scleromalacia nasally and temporally. Both eyes have an irregular cornea reflex due to significant dryness which also likely contributed to the melt. Rheumatoid arthritis (RA) should be high on the differential diagnosis of patients who present with scleromalacia. Autoimmune damage to the lacrimal gland can result in severe dry eye in patients with RA.



Enlarge

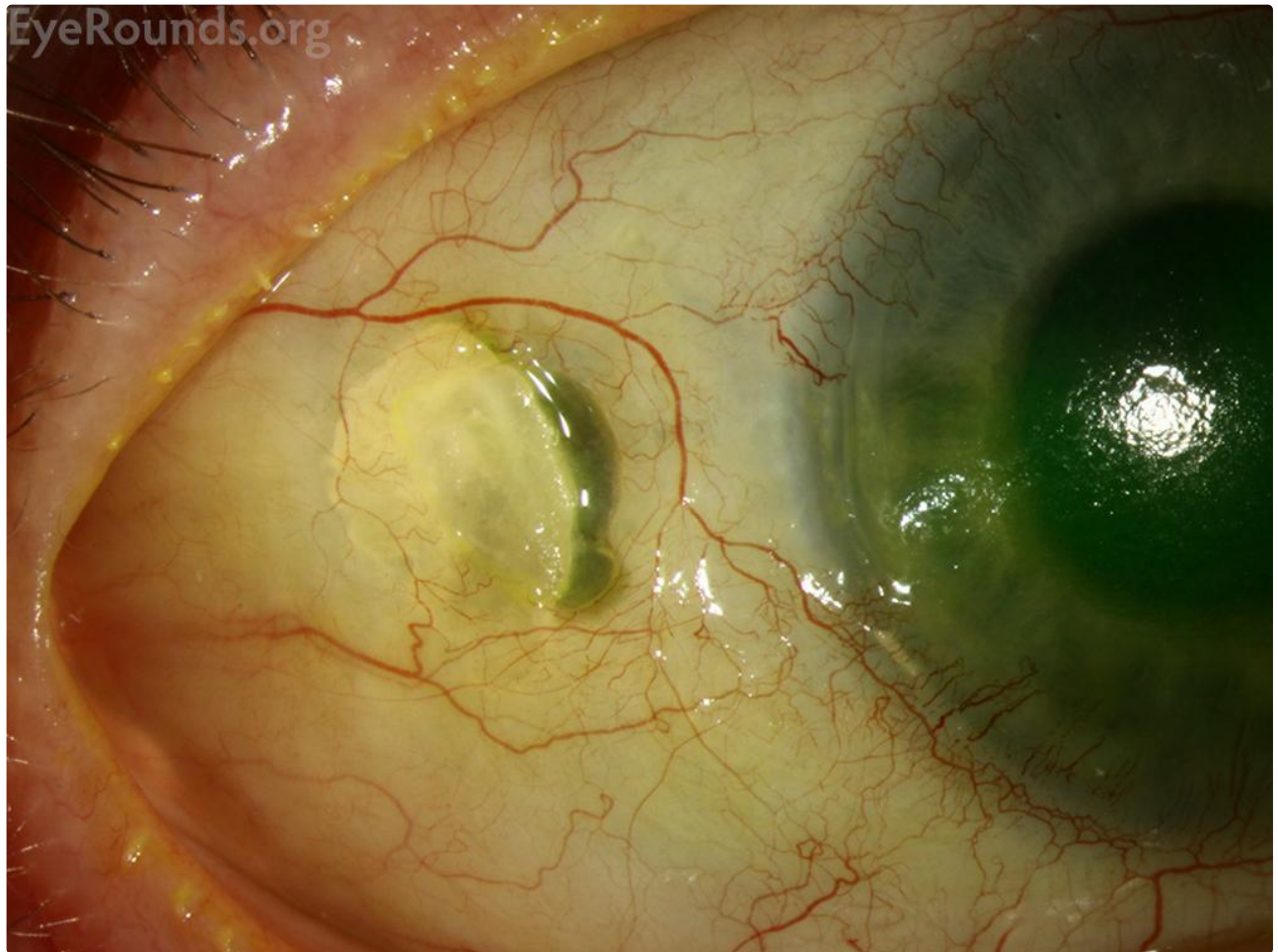
Download





[Enlarge](#)

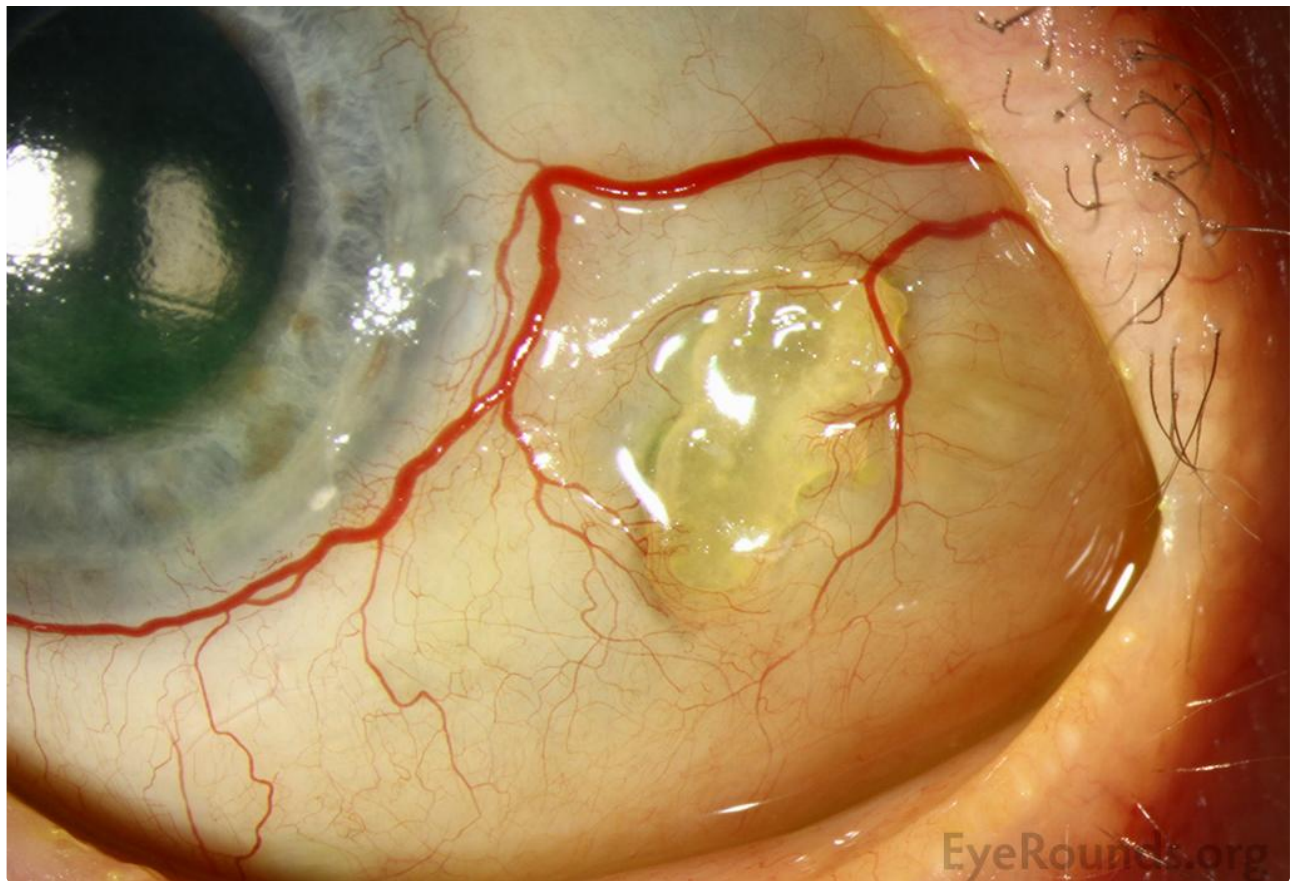
[Download](#)



[Enlarge](#)

[Download](#)





[Enlarge](#)

[Download](#)

### Image Permissions:



Ophthalmic Atlas Images by [EyeRounds.org](#), [The University of Iowa](#) are licensed under a [Creative Commons Attribution-NonCommercial-NoDerivs 3.0 Unported License](#).

### Address

University of Iowa  
Roy J. and Lucille A. Carver College  
of Medicine  
Department of Ophthalmology and  
Visual Sciences  
200 Hawkins Drive  
Iowa City, IA 52242

[Support Us](#)

### Legal

Copyright © 2019 The University of  
Iowa. All Rights Reserved  
[Report an issue with this page](#)  
[Web Privacy Policy](#) |  
[Nondiscrimination Statement](#)

### Related Links

[Cataract Surgery for Greenhorns](#)  
[EyeTransillumination](#)  
[Gonioscopy.org](#)  
[Iowa Glaucoma Curriculum](#)  
[Iowa Wet Lab](#)  
[Patient Information](#)  
[Stone Rounds](#)  
[The Best Hits Bookshelf](#)

### EyeRounds Social Media

Follow



Receive notification of new cases,  
[sign up here](#)  
[Contact Us](#)  
[Submit a Suggestion](#)